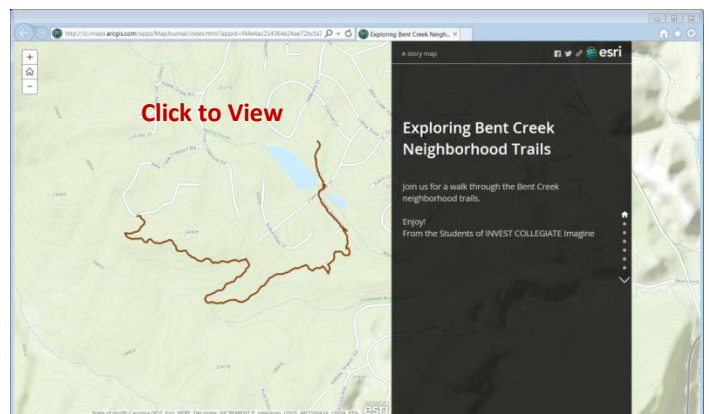


Hendersonville & Henderson County GIS Day 2015 November 19th, 2015



The GIS (Geographic Information Systems) staff of Henderson County and the City of Hendersonville joined forces on Thursday, November 19th to provide a public [GIS Day](#) event featuring presentations, a treasure hunt and a story map project by Invest Collegiate Imagine School.

New this year, staff conducted a pilot project with teachers from a local school to obtain a free ArcGIS online license for their school from the ESRI ConnectEd program. Once online, County and City staff visited the school to provide training and assistance with data collection. The students then created their own story map about a trail they mapped in the Bent Creek area in Buncombe County. They presented their project on GIS Day at the Main Library Branch in the Kaplan Auditorium. All involved were pleased with the completion of a successful pilot project. Plans are to expand the project for GIS Day 2016!





The hunt is on!



Students man the GPS



Digging for the cache.



Found the last piece of the puzzle



Assembling the treasure map pieces.



Following the map through the library



Treasure at last



Fun was had by all!